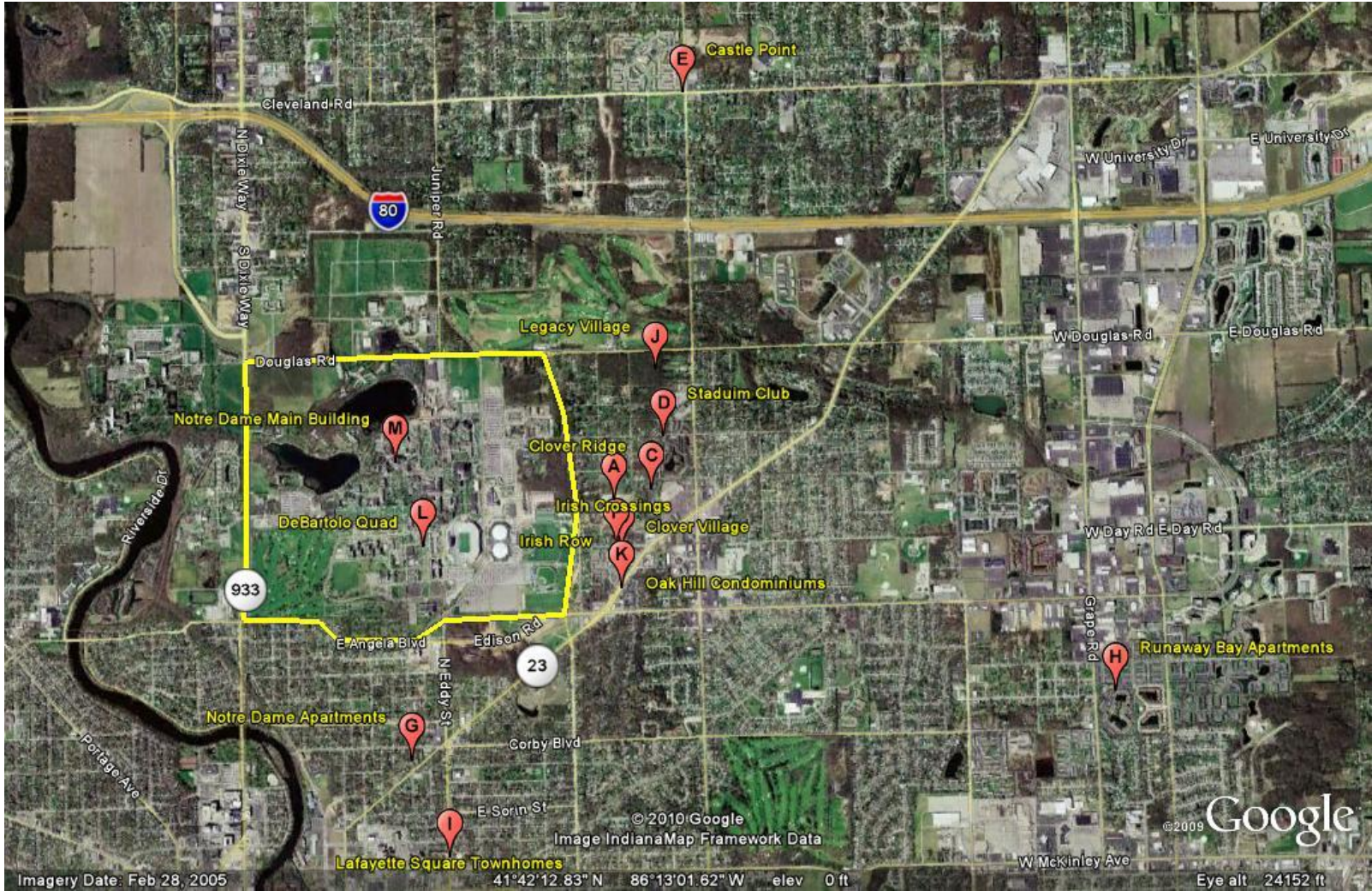


Transfer Student Off-Campus Housing Guide

2013-2014

Apartment Location Map

For a more detailed map please refer to the "Notre Dame Off-Campus Housing Map" on google.com via the link in the "Helpful Links" section on the last page.



- A. Irish Crossings
 - B. Clover Village
 - C. Clover Ridge
 - D. Stadium Club
 - E. Castle Point
 - F. Irish Row
 - G. Notre Dame Apartments
 - H. Runaway Bay Apartments
 - I.
 - J. Legacy Village
 - K. Oak Hill Condominiums
 - L. DeBartolo quad
 - M. Main Building
- Line: Outline of Notre Dame's Main Campus

Clover Village

www.cloverbillageapartments.com

1710 Turtle Creek Dr.
South Bend, IN 46637
(574) 272-8124

This is the most popular choice for transfers-past and upperclassmen moving off-campus.

Distance to Campus: 0.2 mi to the east edge of campus; 0.7 mi to DeBartolo Quad.

- **Walk:** 3 min; 13 min
- **Bike:** 1 min; 3 min
- **Driving:** 3 min to D2 Student Parking Lot + 10 min walking time.

Security: South Bend Police officer lives on site, security company patrols Thursday, Friday, and Saturday.

Lease: Short term leases allowed- call for more information. 10 month Academic Year lease, 12 month leases, subletting allowed.

Laundry: Community machines available at clubhouse.

HVAC: Units in each apartment or townhouse.

Utilities: Water, sewer, and trash are included in rent. Cable, electricity, and Internet must be paid separately.

Amenities:

- Refrigerator
- Dishwasher
- Garbage Disposal
- Central AC and Heat
- Large Room Sizes
- Balcony or Patio
- On Site Management/Leasing Office
- Free Off-street On-site Parking
- Swimming Pool
- Hot Tub
- Free Tanning Beds
- Club House
- Exercise/Fitness Center
- Multi-Million Dollar Renovation
- Professional Grounds and Maintenance Staff 24/7

Parking: one space per tenant as needed, at no additional cost

Units available:

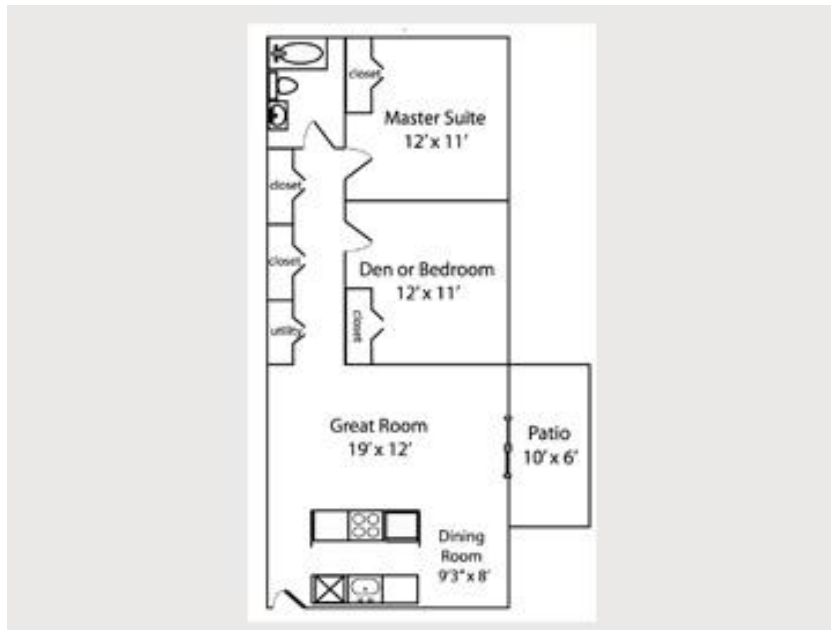
- 1 bedroom: \$695/month
- 2 bedroom townhomes, \$1100/month (\$550 per bedroom) (trash and sewage included) (after 2 tenants, extra \$100 per person)
- 2 bedroom, 1 bath apartments, \$1000/month, up to four tenants permitted (after 2 tenants, extra \$100 per person)
- Studio A 255 sq. foot studio, \$600/month
- Studio B 400 sq. foot studio, \$650/month, electricity included

Floor Plans:

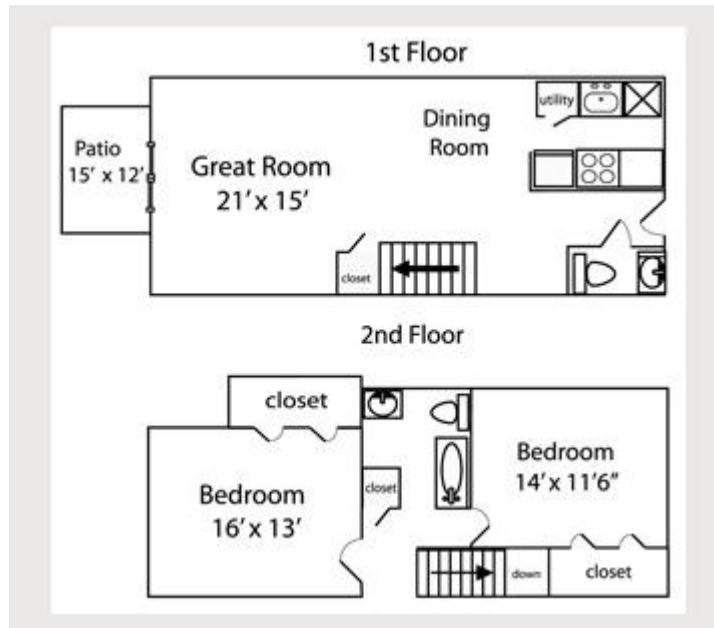
1 Bedroom



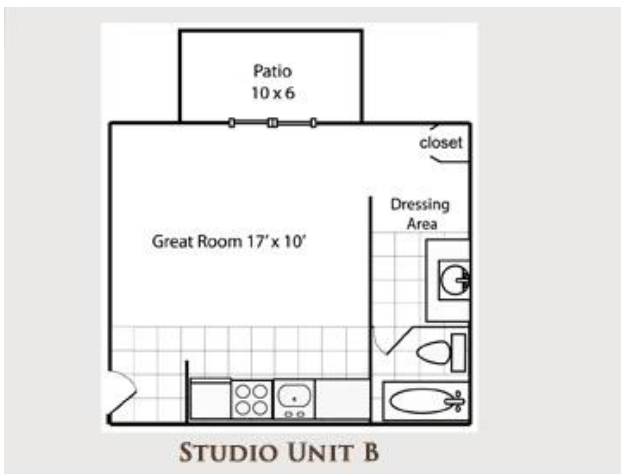
2 Bedroom



2 Bedroom Town Home



Studio



Pictures:



Clover Ridge

www.cloverridgeapartments.com

1801 Irish Way
South Bend, IN 46637
(574) 272-1441

Distance to Campus: 0.4 mi to east edge of campus; approximately 1.1 mi to DeBartolo Quad.

- **Walk:** 7 min; 23 min
- **Bike:** 1min; 5 min
- **Drive:** 4 min to D2 Student Parking lot + 10 min walking time

Security: South Bend Police officer lives on site, other South Bend Police officers patrol periodically.

Lease: 6 month leases allowed at an additional \$100/month; 8 month Academic Year lease, 12 month leases, subletting allowed.

Laundry: Washer/dryer in each apartment

HVAC: Units in each apartment.

Utilities: Cable, Internet, water and trash are included in rent; electric and telephone are the responsibility of the tenant.

Amenities:

- Fully equipped kitchens
- Large private patios or balconies
- Outdoor swimming pool
- Basketball court, sand volleyball court, lit tennis court
- 24-hour fitness center
- Tanning beds

Parking: One space per tenant as needed, at no additional cost.

Units available: LIMITED

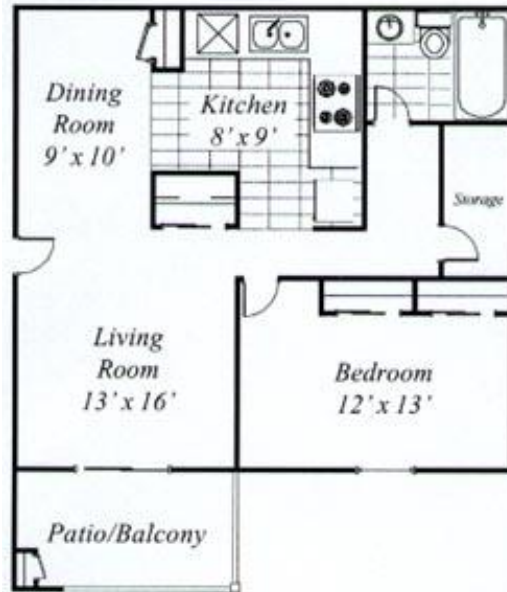
- 1 bedroom, 1 bathroom, 750 ft² and 1 floor. This option costs \$795 per student for 1 student (\$895 for 10 month lease)
- 2 bedrooms, 2 bathrooms, 1000 ft² and 1 floor. This option costs \$600 per student for 2 students (\$700 for 10 month lease)
- 3 bedrooms, 2 bathrooms, 1,000 ft² and 1 floor. This option costs \$465 per student for 3 students (\$565 for 10 month lease)

****** Due to no availability for one bedrooms they are running a lockdown special.**

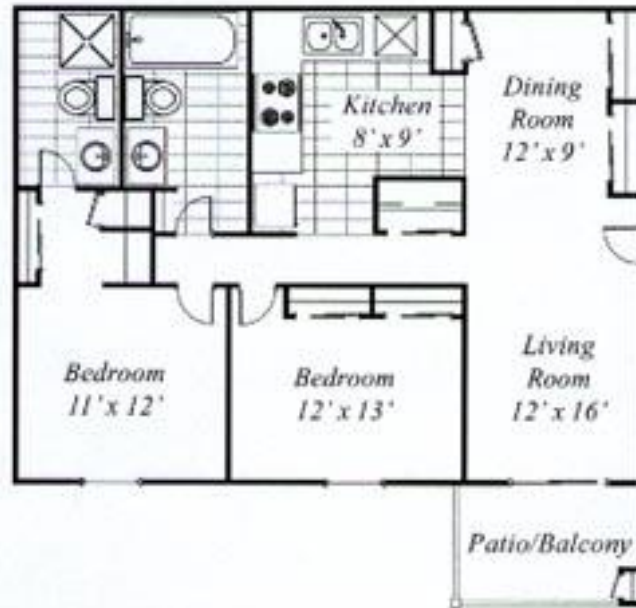
You can have the two bedroom for \$775 with the second bedroom locked, or \$875 to use the second bedroom as a den/office.

Floor Plans:

1 Bedroom



2 Bedroom



3 Bedroom



Pictures:



Stadium Club

www.ndstadiumclub.com

18027-18127 Bulla Rd.
South Bend, IN 46637
(574) 243-7530

Distance to Campus: 0.3 mi to the East edge of campus; approximately 0.8 mi to DeBartolo Quad.

- **Walk:** 5 min; 20 min
- **Bike:** 1 min; 5 min
- **Drive:** 3 min to D2 Student Parking lot + 10 min walking time.

Security: tenants can pay for security from ADT; officer lives on property

Lease: 10, 11, or 12-month leases; Select number of 5 month leases allowed

Laundry: Washer/dryer in all apartments.

HVAC: Units in all apartments.

Utilities: Internet is included in rent; water, gas, and electric are the responsibility of the tenant. Stadium Club pays up to \$50 of 1st electric bill

Amenities:

- Volleyball court
- Picnic area with grills
- Breakfast for tenants once a month

Parking: One space per tenant.

Units available:

- 1 bedroom, 1 bath \$540/ month
- 2 bedroom, 2 bath 1250 sq ft. apartment on the second floor, \$1000/month, up to four tenants. This rent includes waste, trash, broadband, water. Lease is 10 months
 - Security deposit = \$400
- Some owned units that would possibly consider leasing as well
- Lease is per unit, not per person- Max of 2 people in 1 bedroom; max of 4 people in 2 bedroom

Pictures:



Castle Point

www.cppj.com

18011 Cleveland Rd.
South Bend, IN 46637
(574) 272-8110

Distance to Campus: 2.3 mi to Northeast corner of campus; 3.4 mi to DeBartolo Quad.

- **Bike:** 6 min; 13 min
- **Drive:** 5 min drive to D2 Student Parking Lot + 10 min walk.

Security: Peepholes and security doors.

Lease: No month-by-month leasing. If you lease for 6 months, there is a charge of \$75 for each additional month. If leased for 9 months, the extra month fee is \$50. 12 and 14 month leases have no additional month-fees.

Laundry: Laundry machines in each building, keyed entry.

HVAC: Units in all apartments.

Utilities: Water, trash, and sewage are included in rent; electric, Internet, and cable are the responsibility of the tenant.

Amenities:

- Patio and balcony
- View
- Disposal
- Dishwasher
- Pet Policy: Cats, birds, fish only w/ deposit (\$200)
- Air Conditioning
- Cable Hookup

- Furnished Available
- Pool and Spa
- Clubhouse
- Courtyard
- Storage
- Parking: Carports available
- Fitness Center & sauna
- Tennis Court
- Laundry Room
- Covered Parking
- Controlled Access

Parking: no assigned parking

Availability as of June 25, 2013

1 Bedroom Units

Andorra	768 Sq. ft.			\$519/mo		
Unit	Available Date	Bed	Bath	Sq. Ft.	Rent	Deposit
0401	08/15/2013	1	1	768	\$519.00	\$200.00
0402	08/15/2013	1	1	768	\$519.00	\$200.00
2403	08/15/2013	1	1	768	\$519.00	\$200.00

Balmoral	737 Sq. ft.			\$499/mo		
Unit	Available Date	Bed	Bath	Sq. Ft.	Rent	Deposit
1418	Available Now	1	1	737	\$499.00	\$200.00
1710	Available Now	1	1	737	\$499.00	\$200.00
0502	Available Now	1	1	737	\$499.00	\$200.00

Windsor	887 Sq. ft.			\$579/mo		
Unit	Available Date	Bed	Bath	Sq. Ft.	Rent	Deposit
0920	Available Now	1	1	887	\$579.00	\$200.00

Two Bedroom Units

Deauville	1025 Sq. ft.			\$599/mo		
Unit	Available Date	Bed	Bath	Sq. Ft.	Rent	Deposit
1212	Available Now	2	1	1025	\$599.00	\$200.00
1902	08/15/2013	2	1	1025	\$599.00	\$200.00

Barbizon	1025 Sq. ft.			\$629/mo		
Unit	Available Date	Bed	Bath	Sq. Ft.	Rent	Deposit
1311	06/15/2013	2	1.5	1025	\$629.00	\$200.00
0112	07/15/2013	2	1.5	1025	\$629.00	\$200.00
1625	Available Now	2	1.5	1025	\$629.00	\$200.00

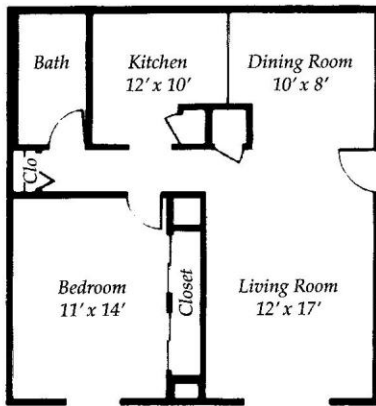
Matterhorn		1340 Sq. ft.	\$759/mo			
Unit	Available Date	Bed	Bath	Sq. Ft.	Rent	Deposit
0214	06/15/2013	2	1.5	1340	\$759.00	\$200.00
0409	06/15/2013	2	1.5	1340	\$759.00	\$200.00

Moritz		1190 Sq. ft.	\$699/mo			
Unit	Available Date	Bed	Bath	Sq. Ft.	Rent	Deposit
1814	Available Now	2	1.5	1190	\$699.00	\$200.00
2321	06/15/2013	2	1.5	1190	\$699.00	\$200.00
2813	07/15/2013	2	1.5	1190	\$699.00	\$200.00

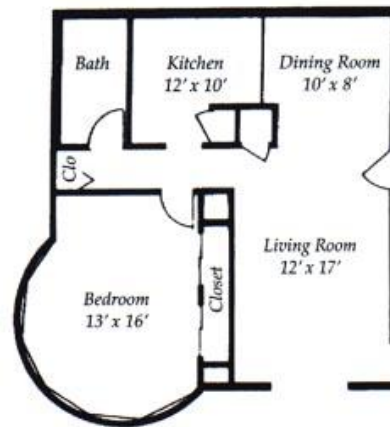
Floor Plans:

1 Bedroom

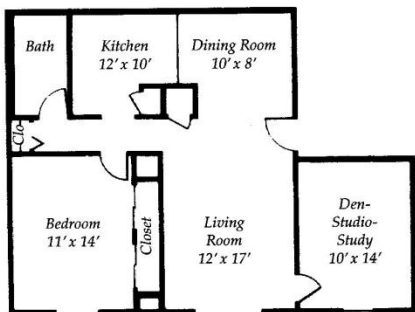
BALMORAL
Single Bedroom



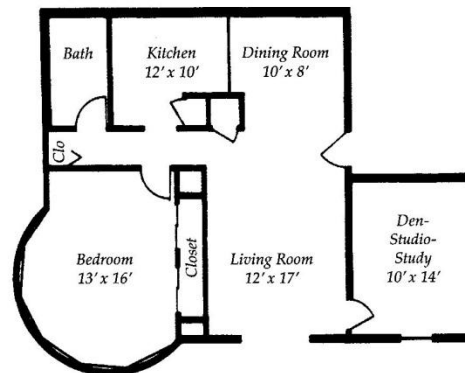
ANDORRA
Single Bedroom



WINDSOR
Single Bedroom and Den



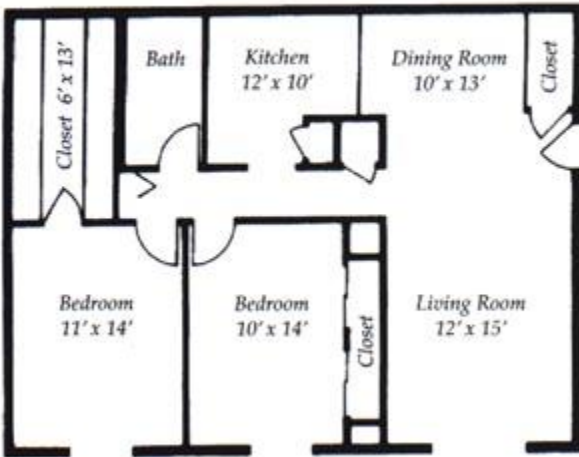
NOTTINGHAM
Single Bedroom and Den



2 Bedroom 1 Bath

DEAUVILLE

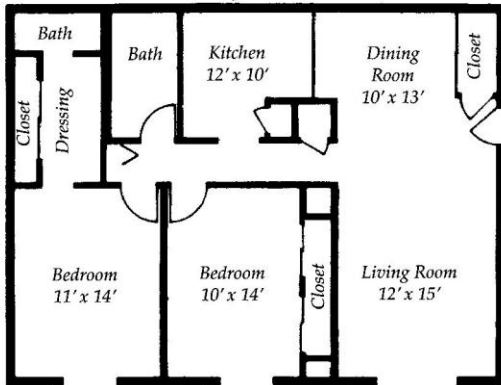
Two Bedroom with one Bath



2 Bedroom 1.5 Bath

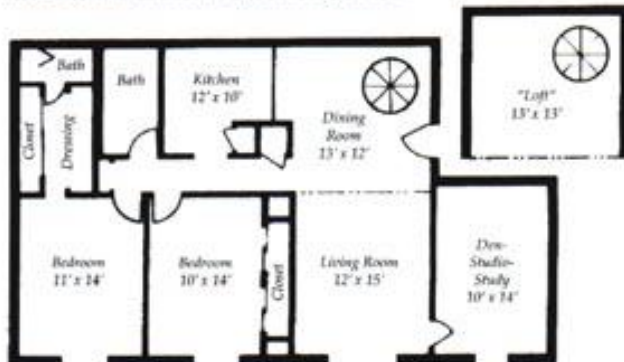
BARBIZON

Two Bedroom with one and one-half Bath



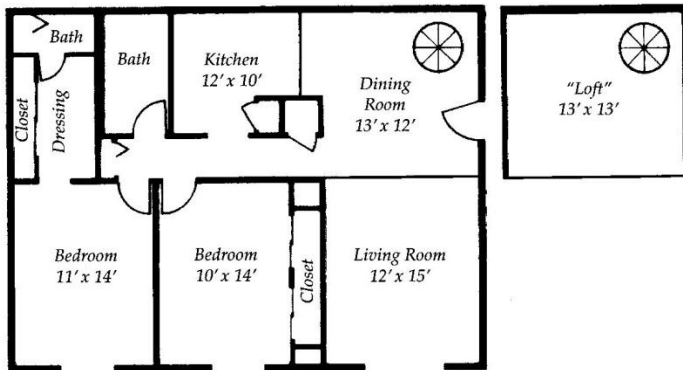
MATTERHORN

Two Bedroom with one and one-half Bath, Balcony and Den



MORITZ

Two Bedroom with one and one-half Bath and Balcony



Pictures:



Irish Row

www.irishrowapartments.com

Irish Row Apartments
1855 Vaness St.
South Bend IN 46637
(574) 277-6666

Availability: Limited Units Available

Distance to Campus: 0.2 mi to the east edge of campus; 0.7 mi to DeBartolo Quad.

- **Walk:** 3 min; 13 min
- **Bike:** 1 min; 3 min
- **Driving:** 3 min to D2 Student Parking Lot + 10 min walking time.

Security: Tenant controlled access. Security patrolled.

Lease: 5, 10, 12 month leases. 5 month lease is extra \$100

Laundry: Machines available in apartment.

HVAC: Units in each apartment or townhouse.

Utilities: Electricity, Cable, and Internet must be paid by tenant; most other utilities are included in rent.

Amenities: Furnished apartments and townhomes include a 42' HDTV, free DVR, cable, internet, refrigerator and washer and dryer in each unit. Every bedroom has its own private, full bathroom. Up to 4 bedrooms per unit. FREE use of Fitness Center. On-site tanning. Walking distance to campus, as well as groceries, drugstore and restaurants.

Units:

- 1 bedroom, 1 bath. This option costs \$875/month for 12 month lease.
- 2 bedrooms, 2 bathrooms, 815 ft² and 1 floor. This option costs \$758 per student for 2 students.
- 3 bedrooms, 3 bathrooms, 1,020 ft² and 1 floor. This option costs \$749 per student for 3 students.
- 3 Story, 4 Bedroom, 4.5 Bathroom, \$862/person
- 2 Story, 4 Bedroom, 4.5 Bathroom, \$862/person
- Deposits are \$700 security and \$100 for maintenance.

Floor Plans:

2 Bedroom / 2 Bathroom



3 Bedroom / 3 Bathroom



3 Story 4 Bedroom / 4.5 Bathroom



2 Story 4 Bedroom / 4.5 Bathroom



Pictures:



Kramer Properties

<http://www.kramerhouses.com/>

Office:

812 E. LaSalle

South Bend, Indiana 46617

(574) 234-2436

Apartments

Distance to Campus: Approximately 0.6 mi to the south edge of campus; 1 mi to DeBartolo Quad.

- **Walk:** 12 min; 18 min
- **Bike:** 3 min; 5 min
- **Drive:** Approximately 8 min drive to D6 Student Parking Lot + 10 min walk.

Security: Peepholes and security doors.

Lease: No month-to-month leasing, subletting allowed.

Laundry: Laundry room with keyed entry.

HVAC: Units in each apartment.

Utilities: Water and Internet included in rent, all other utilities are the responsibility of the tenant.

Parking: Unassigned, off-street parking.

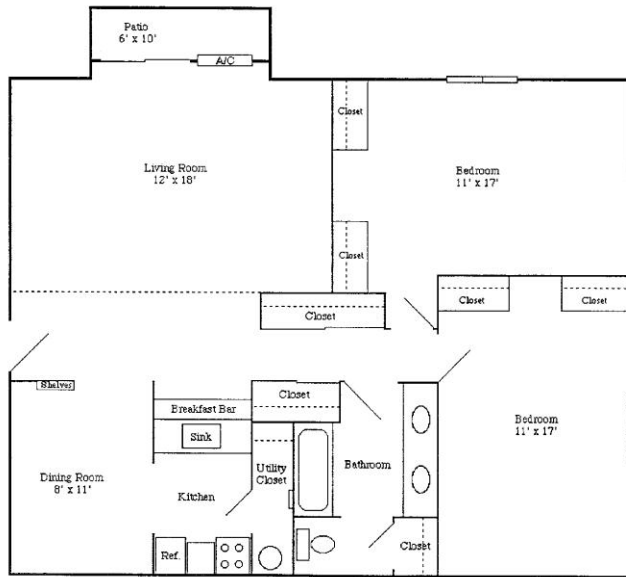
Units Available:

- 2 bedroom, 1 bath apartments, up to four tenants, \$900/month
- 1320 Hilcrest: 3 units,
 - Two Studio, \$600, all utilities except electric
 - One 1 bedroom, \$700
 - One 2 bedrooms \$900, heat and water
- 1109 Lawrence St.: one 1 bedroom, \$700, internet and utilities included

Homes: ADT security included

- **834 Sorin: 2 bedroom, \$900/month, lawn care included**
- **1237 Pyle Ave: 3 bedroom/ 1 bathroom, new appliances**
- **120 Frances Street: 4 bedroom/ 2 bathroom, \$450/ student/ month**

Floor Plan:



Runaway Bay Apartments

www.runaway-bay.com

302 Runaway Bay Circle
Mishawaka IN 46545
(574) 256-1350

Distance to Campus: 2.5 mi to south east side of campus; 3.4 mi to DeBartolo Quad.

- **Bike:** 15 min; 20 min
- **Drive:** Approximately 9 min drive to D2 Student Parking Lot + 10 min walk.

Security: Security officer on duty/lives on site. Occasional patrol.

Lease: 6-12 month leases. 6 month leases are available in fall and based upon space available. Optional month-by-month lease renewal.

Laundry: Each unit has hook ups for machines, or you can rent a set for \$20 a month. There are also communal laundry machines in each building.

HVAC: Units in each apartment.

Utilities: Pay own utilities around \$50-\$150 based on size of room.

Amenities:

- 2 lakes, waterfalls, and gazebo
- Optional microwaves
- Optional carports and garages
- Washer/Dryer connections
- Dens with built-in desks
- Walk-in closets
- Self-cleaning ovens

- Frost-free refrigerators
- Central air conditioning
- Swimming pool
- Two lighted tennis courts
- Fully equipped exercise facility
- Sauna
- Volleyball court
- Clubhouse with party room, fireplace, and kitchen
- Optional: Garages/Carports, microwaves
- Pets allowed in selected apartment homes

Units: All types available

Floor Plans:

- The Windward: rent \$620
- The Waterway: rent \$680
- The Seafarer: rent \$695
- The Seaway: rent \$745

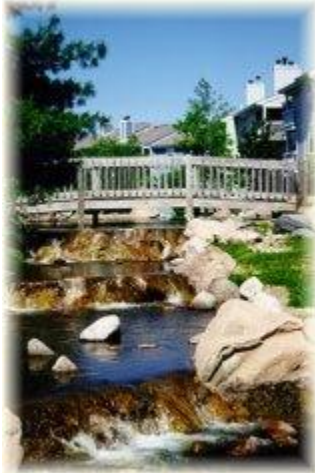
1 Bedroom



2 Bedroom



Pictures:



Irish Crossing Town Homes

www.irishcrossings.com

54669 Irish Crossings Lane
South Bend IN 46637
(574) 273-2000
(574) 277-6666 (Leasing office)

FULL, NO UNITS AVAILABLE FOR COMING SCHOOL YEAR

Distance to Campus: 0.2 mi to the east edge of campus; 0.7 mi to DeBartolo Quad.

- **Walk:** 3 min; 13 min
- **Bike:** 1 min; 3 min
- **Driving:** 3 min to D2 Student Parking Lot + 10 min walking time.

Security: Tenant controlled access. Security patrolled.

Lease: 12 month leases, subleases permitted.

Laundry: Machines available in apartment.

HVAC Units in each apartment or townhouse.

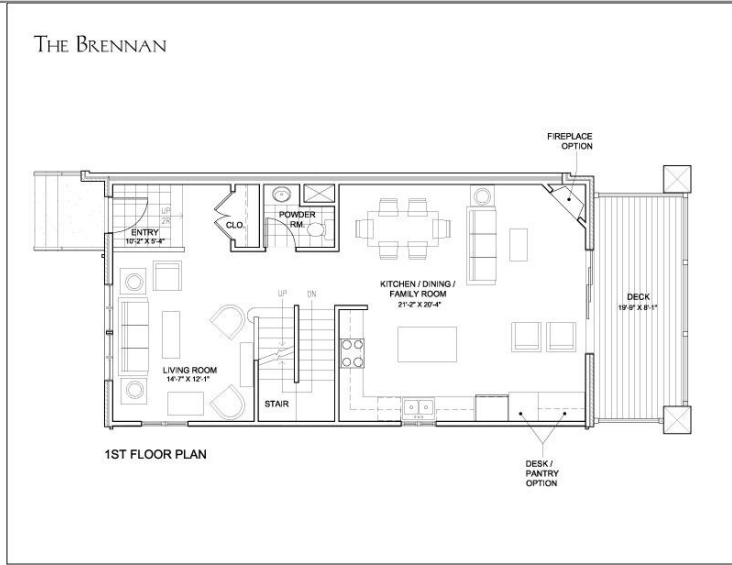
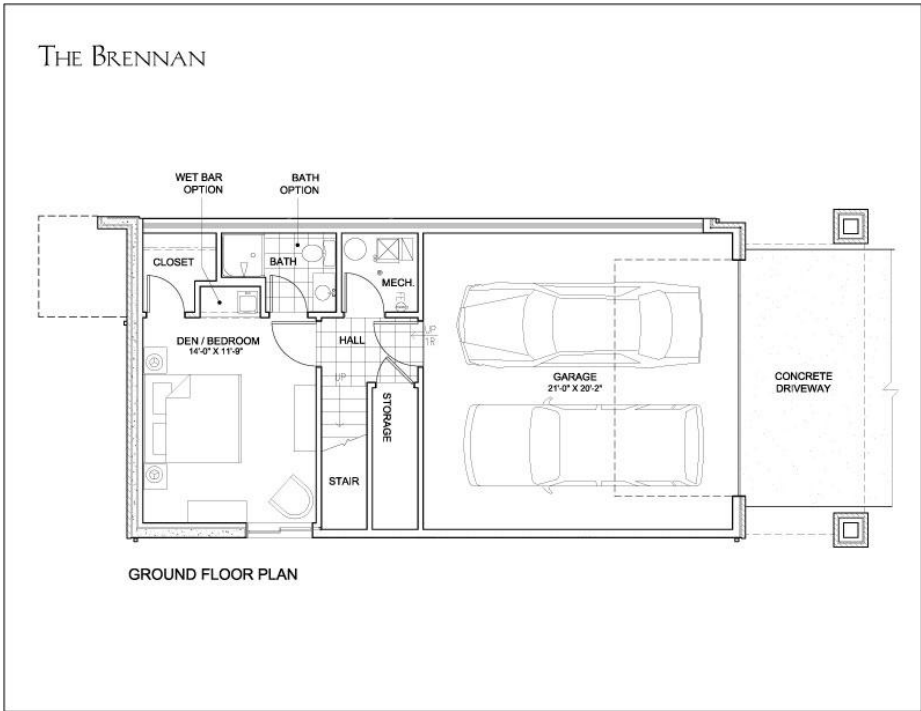
Amenities:

Furnished apartments and townhomes include a 42" HDTV and washer and dryer in each unit. Every bedroom has its own private, full bathroom. Up to 4 bedrooms per unit. FREE use of Fitness Center. On-site tanning. Walking distance to campus, as well as groceries, drugstore and restaurants.

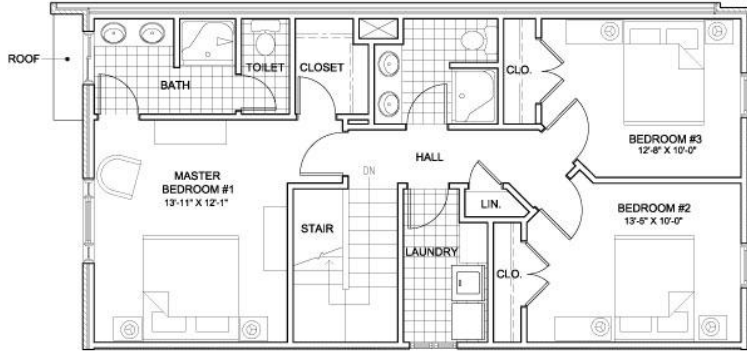
Units:

- 4 bedrooms, 4 bathrooms, 2,200 ft² and 2 floors. This option costs \$832 per student for 4 students.
- 4 bedrooms, 4 bathrooms, 2,600 ft² and 3 floors. This option costs \$832 per student for 4 students.
- 2 and 3 bedroom units, \$728 per student
- Security deposits are \$832 and there is a one-time maintenance fee of \$300

Floor Plans:

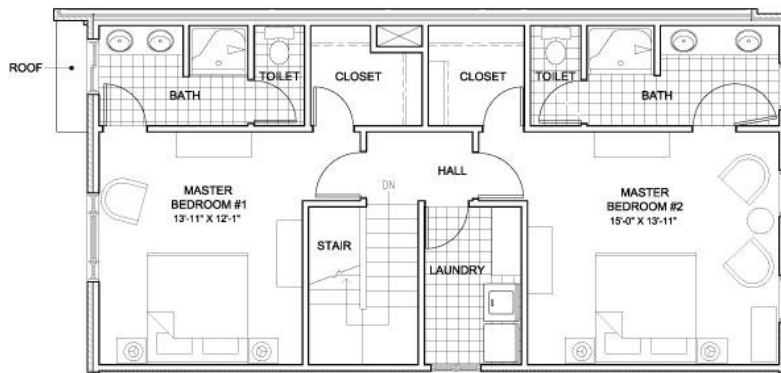


THE BRENNAN



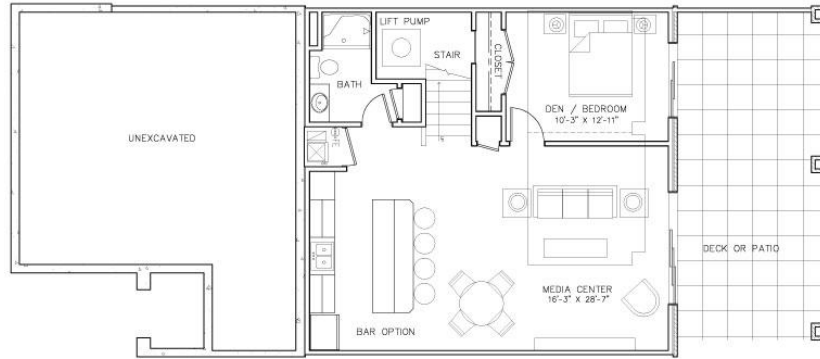
2ND FLOOR - 3 BEDROOMS

THE BRENNAN



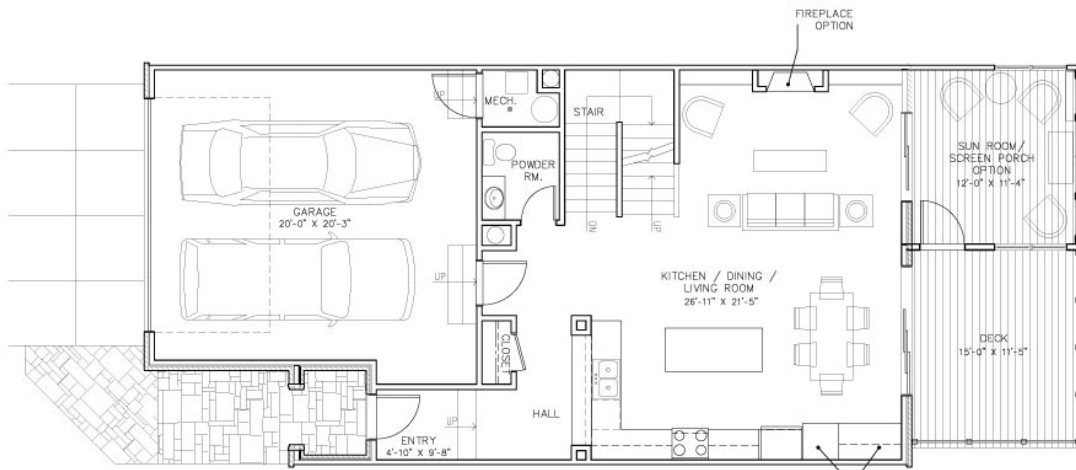
2ND FLOOR PLAN - 2 MASTER SUITES

THE DELANEY



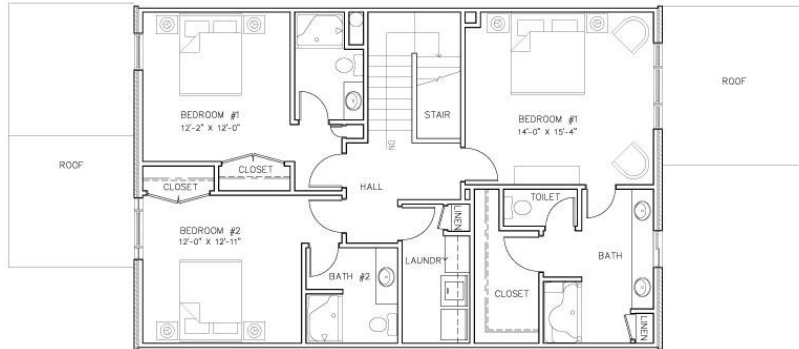
GROUND FLOOR PLAN

THE DELANEY



1ST FLOOR PLAN

THE DELANEY



2ND FLOOR PLAN

Pictures:



Legacy Village- nothing available

www.rwdcampusdevelopments.com

McErlain St.
Notre Dame IN 46556
(630) 655-3223

Distance to Campus: 1.3 mi to east border of campus; approximately 2 mi to DeBartolo Quad.

- **Bike:** 8 min; 12 min
- **Drive:** 5 min to D2 Student Parking Lot + 10 min walk.

Security: Fire/security system in unit, monitored by ADT.

Lease: Normally 12-month lease.

Laundry: Laundry machines in house.

HVAC: Unit in house.

Utilities: Tenant responsible for utilities ~\$100 per month.

Parking: parking per units.

Units Available: None for this year or next year

- The rental cost is \$785 per student if 6 students live in unit plus utilities.
 - \$600 Security deposit for house

Amenities:

- 14 homes located 1.3 miles from campus
- Each home has 3,200 square feet and is fully-furnished with 6 bedrooms (includes bed and mattress, nightstand, dresser and desk with chair), 3 ½ bathrooms
- Kitchen (includes range/oven, refrigerator/freezer, dishwasher and microwave),
- Family room (includes leather furniture, 42" flat screen TV, tables and fireplace)
- Dining room (includes table and 8 chairs)
- Laundry room (includes washer, dryer and freezer)
- Rear patio with furniture and barbeque grill.
- Each house also has storage closets, a wireless internet system, a fire-sprinkler system and a fire/security system.
- All units come fully furnished on the first floor and each bedroom comes equipped with a full size bed, headboard, nightstand, dresser, desk/hutch unit and desk chair.
- All buildings include a state of the art fire protection system and are burglar protected. Each unit comes with a private patio including a gas grill.

Pictures:



Irish Realty

www.cooreman.com

(574) 277-0116

For more information on townhomes and/or condominiums contact Irish Realty. Month-to-month leasing is possible in some instances.

Helpful Links

- Notre Dame Off-Campus Housing Map:
http://maps.google.com/maps/ms?source=s_q&hl=en&geocode=&ie=UTF8&hq=Irish+Crossings,&hnear=South+Bend,+IN+46637&msa=0&msid=111547883839478092885.000489caa95a6b1f71ee2&ll=41.709445,-86.221218&spn=0.058436,0.154324&z=13
- <http://notredame.isoffcampus.com/>

- The Off Campus Connector: <http://offcampus.nd.edu>
- <http://southbend.craigslist.org/apa>
- <http://bumbacahouses.com>
- <http://www.nd-condos.com>
- <http://www.ndtoday.com/offcampus/>